

Review Article

Use of Artificial Intelligence Applications: Friend or Threat for Indonesian Language and Literature Education Students at Singaperbangsa University of Karawang

¹Bahar Amal, ²Aqillah Khaierunnisa, ³Elisa Rahmawati, ⁴Naora Syifa, ⁵Pramesvary Nazwa Dewani, ⁶Putri Ratih Septariyani, ^{7,*}Syahrul Ilham Fauzi 

^{1,2,3,4,5,6,7} Universitas Singaperbangsa Karawang, Adiarsa Barat, West Java, Indonesia

* Corresponding Author: syahrulif22@gmail.com

Abstract: This research aims to explore the impact of artificial intelligence (AI) on students of Indonesian Language and Literature Education students at Singaperbangsa Karawang University. Through a survey of Indonesian Language and Literature Education students, this study shows that AI has become a popular tool to support the learning process, but also raises concerns about excessive dependence and a decline in critical thinking skills. The results show that AI can be a valuable tool to assist students in various academic tasks, but can also pose a threat if used unwisely. Therefore, it is important for students to understand the potential and limitations of AI, and to use it in a balanced manner to achieve optimal learning outcomes.

Keywords: Artificial intelligence (AI); Indonesian language and literature education students; education; technological impact; challenges.



Citation: Amal, B., et.al. Use of Artificial Intelligence Applications: Friend or Threat for Indonesian Language and Literature Education Students at Singaperbangsa University of Karawang. *Iota*, 2024, ISSN 2774-4353, Vol.04, 04. <https://doi.org/10.31763/iota.v4i4.821>

1

Academic Editor : Adi, P.D.P

Received : September, 26 2024

Accepted : October, 17 2024

Published : November, 08 2024

Publisher's Note: ASCEE stays neutral with regard to jurisdictional claims in published maps and institutional affiliations.



Copyright: © 2024 by authors. Licensee ASCEE, Indonesia. This article is an open access article distributed under the terms and conditions of the Creative Commons Attribution Share Alike (CC BY SA) license (<https://creativecommons.org/licenses/by-sa/4.0/>)

1. Introduction

Education is an essential aspect of improving human resources. However, in the face of technological developments and global challenges that are getting more complex by the day, education also needs to transform to remain relevant and able to prepare future generations. In the ever-evolving digital era, artificial intelligence has emerged as a transformation that changes education, the use of artificial intelligence in the education transformation process is an important issue to build relevant education in the future (Liriwati, 2023).

Artificial intelligence, also known as AI, is a branch of science that tries to understand human intelligence. This AI tries to build some smart entities that match human understanding. Some of these built smart entities turn out to be very interesting and can accelerate the process of understanding human intelligence. AI is one of the most important things in understanding human intelligence. Artificial intelligence is defined as a subset of computer science that is programmed to do the work that humans do. In the beginning, the purpose of making computers was only as a calculation tool. However, along with the times, the role of this computer is very dominant in human life (Jaya, 2018).

The development of artificial intelligence has brought many significant changes in various aspects of human life. In the field of education, AI has also influenced students' mindsets, and learning attitudes, and is used as an evaluation tool in assignments or assessments. In addition, it can guide students through various curriculum paths according to their needs.

While AI provides many benefits, it also raises some challenges that need to be solved, so that students' motivation to learn or ability to learn continues to increase. One of the main influences of AI on the mindset of students is the perception of dependence on technology. AI can provide information quickly and easily, students tend to rely on this AI as the main source of knowledge. This of course can reduce their reasoning power in finding information independently and understanding concepts in depth. This mindset emphasizes that AI is an aid rather than a substitute for learners' critical thinking and analysis skills. In addition, AI can also affect learners' learning attitudes. Some of them may feel threatened by the advancement of AI because they believe that AI can do any task they do, thus reducing their motivation to learn.

AI can be very smart, but it still needs human help. AI wouldn't exist without humans creating and teaching it. AI works by combining large sets of data that it is taught. AI is a machine, so it doesn't need to rest like humans. Therefore, AI can perform millions and even billions of jobs very quickly, learn in a very short time, and be able to do anything according to what it is taught and trained. Thus, it is important for educators and parents to always help students understand that AI is a tool that can help and expand their capabilities, not replace them.

Based on the topic that the researcher raised, namely "The Use of Artificial Intelligence: As a Threat or Friend of Indonesian Language and Literature Education Students at Singaperbangsa Karawang University", the researcher hopes that Indonesian Language and Literature Education students at Singaperbangsa Karawang University can understand the impact of using artificial intelligence applications in the academic world and utilize them wisely. It is important to realize that AI can be a very useful tool in accelerating the learning process and developing academic work, but excessive dependence can reduce students' critical abilities and creativity.

This research aims to document the role and impact of AI on the learning of Indonesian Language and Literature Education students and explore how this technology can be both a threat and a friend in the academic process. This research also discusses how students can utilize AI wisely to support their learning process, without compromising their intellectual and emotional abilities.

For example, research conducted by Rachmadana et al. (2022) revealed that AI can provide convenience in the preparation of scientific papers, such as in data processing, reference searching, and drafting. However, if students rely too much on AI, there is a risk that they will lose the critical and analytical thinking skills that are at the core of higher education, especially in study programs such as Indonesian Language and Literature Education which emphasize language acquisition, reasoning, and creativity.

The benefit of this research is to guide Indonesian Language and Literature Education students at Singaperbangsa Karawang University, in utilizing AI to accelerate the academic process, while still maintaining a balance between technology and human skills. Students are expected to understand that although AI can help in various aspects of learning, critical thinking, creativity, and emotional intelligence are still important and cannot be fully replaced by machines.

Table 1. Comparison between Researchers

Researcher	Focus on AI Usage	Positive Impact	Negative Impact
Bahar Amal et al. (PBSI UNSIKA, 2024)	AI in academic tasks and learning of PBSI students	Assisting students in completing assignments, improving learning efficiency, and making it easier to find information	Assisting students in completing assignments, improving learning efficiency, and making it easier to find information
Rachmadana et al. (2022)	AI in the preparation of scientific work	Facilitate data processing, reference search, and writing preparation	Risk of AI dependency that may reduce students' analytical thinking skills
Ahnaf & Setiadi (2023)	AI in the creative industry (e.g. animation)	Helps create complex visual designs and improve the quality of work with minimal intervention	Replacing human labor, increasing unemployment risk in creative industries
Akbar et al. (2023)	AI in time management and presentation preparation	Helps students manage time, prioritize tasks, and structure presentations more effectively	Over-reliance can reduce motivation to learn and creativity.

Thus, the use of AI should be seen as a friend that helps the learning process, not as a threat that replaces the role of humans. Students should still cultivate the ability to think independently, write well, and create original ideas that are not entirely dependent on artificial intelligence.

2. Material & Methods

Research on the use of Artificial Intelligence (AI) applications in learning Indonesian Language and Literature Education students uses descriptive methods with a qualitative approach. This method aims to describe and interpret the data collected as much as possible in the situation being studied. According to I Made Winartha (2006), the qualitative descriptive method is the process of analyzing, describing, and summarizing various data derived from conditions and situations through interviews or field observations. This research reflects the real situation in the field using a simple qualitative approach. Descriptive qualitative is often used for social phenomena, such as research on the application of AI among university students. This method allows the researcher to explain the course of the research flexibly and be open to various possible problems that arise. The subjects of this research are Indonesian Language and Literature Education students from batches 2022, 2023, and 2024 who were chosen because they are considered to be aware of the development of technology and information. Meanwhile, the object of research is the application of artificial intelligence, which has currently developed in various fields and makes it easier for students to complete their tasks. Some AIs that can help students include Gemini, Perplexity, Microsoft Bing, and ChatGPT.

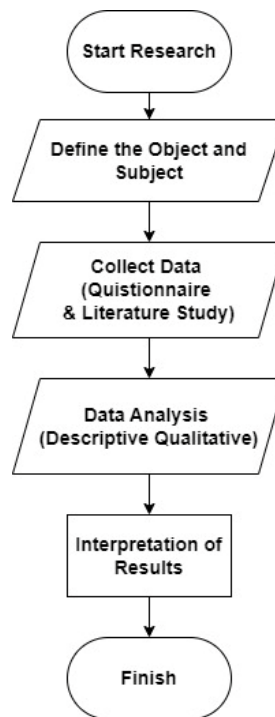


Figure 1. Flowchart in this review

This research involves two types of data, namely primary data and secondary data. Primary data was obtained directly secondary data was obtained from the results of literature studies, articles, and journals, which served as supporting data. Meanwhile, secondary data were obtained from literature studies, articles, and journals, which served as supporting data in this study. Data collection was carried out by distributing questionnaires containing several questions, the respondents answered by selecting the appropriate answers and typing their respective opinions. A total of 32 respondents participated in filling out the questionnaire, and the data was used as support in the article compiled by the researcher. This research also relates the use of AI among Indonesian Language and Literature Education students at Singaperbangsa University of Karawang, AI can be seen as a friend that facilitates academic tasks, but it also has the potential to become a threat if overused because it can reduce students' critical thinking skills and creativity.

3. Result and Discussion

According to research (Hadana et al., 2023) (Purbohadi, 2022) Artificial Intelligence (AI) has brought many positive changes in various industries. However, like other technologies, AI also has negative impacts that need to be considered. The following are the negative effects of AI in the industrial world, one of the most frequently discussed negative effects of AI is the replacement of human workers with machines or robots that use AI. AI can quickly create highly complex visual works based on previously provided data and patterns.

According to (Ahnaf & Setiadi, 2023) Deep learning algorithms and artificial neural networks allow AI to learn from large data sets and create diverse designs with minimal human intervention. The application of AI has also touched the world of cinema and animation. In research (Ainunning Puri et al., 2023) (Rifki Risandhy, 2023) Several movie studios use AI to create stunning visual effects and animation. AI can create highly realistic digital characters and simplify the filmmaking process. Improving the quality of work AI also helps create higher quality work, especially in terms of graphics and design. In the movie industry, AI helps in the editing process, image editing, and visual effects. While in the design industry, AI can help create patterns, identify trends, and optimize product design as mentioned in research (Aprilliani et al., 2023).

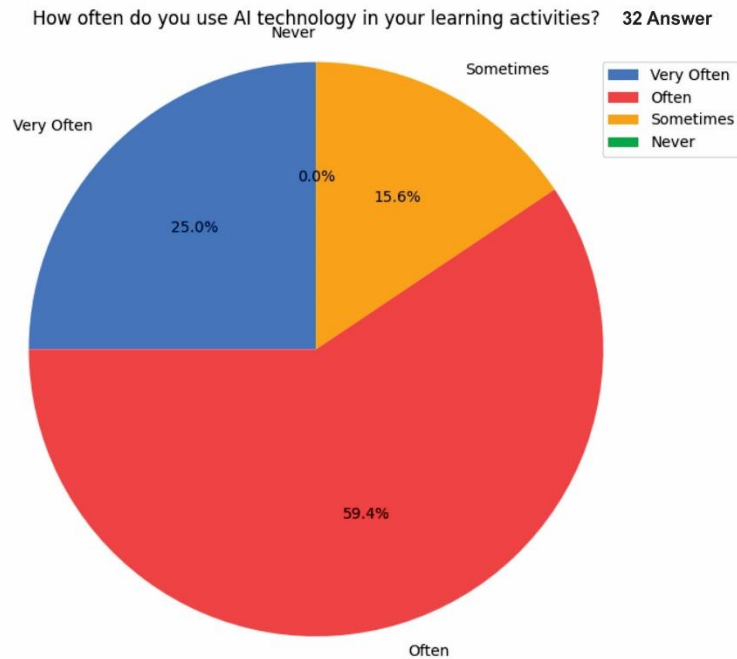


Figure 2. Questionnaire 1: How often do you use AI technology in your learning activities?

Along with the growing capabilities of AI, some human jobs can be replaced by machines that are more efficient and accurate. According to (Arifah, 2022) (Prasetio, 2024) this can result in unemployment and economic uncertainty for workers who lose their jobs. The use of AI in the creative industry can also lead to job losses. Some jobs in the creative industry can be replaced by machines because AI completes tasks that are usually done by humans.

Moreover, AI is felt to be a threat to workers in the creative industry, especially students of the Indonesian Language and Literature Education study program at Singaperbangsa University of Karawang. Therefore, we created a questionnaire to find out how concerned the students of the Indonesian Language and Literature Education study program at Singaperbangsa Karawang University are about the impact of AI in the creative industry. From the questionnaires that we have distributed, 32 student respondents in this study are active students of the Department of Indonesian Language and Literature Education class of 2022, 2023, and 2024. From the results that have been calculated, some students quite often use AI technology in learning activities.

Various factors influence why several Indonesian Language and Literature Education students use AI technology quite frequently in learning activities, namely, AI facilitates learning and research that assists students in completing their academic tasks. We can observe that AI can do a lot of work in a short time. In just a few seconds AI can produce answers or research materials that humans cannot possibly do in such a short time. But on the other hand, this also raises a debate because the work process carried out by AI is not 100% the original result of AI itself, but is modified according to the existing set of images according to the user's wishes.

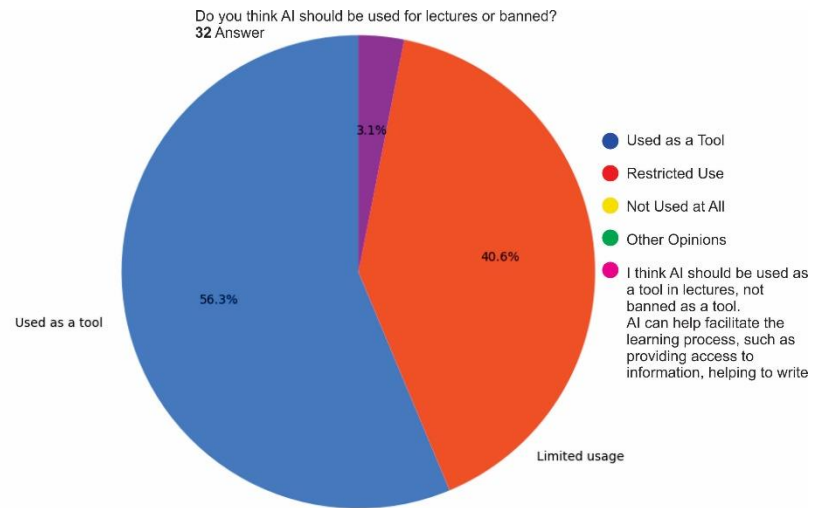


Figure 3. Questionnaire 2: Do you think AI should be used for lectures or banned?

Based on a survey conducted, the majority of Indonesian Language and Literature Education students at Singaperbangsa Karawang University felt that AI was very helpful in understanding and doing coursework. This shows that AI has become quite a popular tool among students to improve learning efficiency. However, there are also some students of Indonesian Language and Literature Education at Singaperbangsa Karawang University who feel that AI is just a tool whose use needs to be limited. This indicates that although AI has great potential, its use still needs to be tailored to the needs and preferences of each individual. They may use AI to find information, check concept understanding, or even as a virtual tutor. However, it is important to remember that AI is not a replacement for lecturers or textbooks. Students need to remain active in their learning and critical thinking, and not rely entirely on AI to complete tasks.

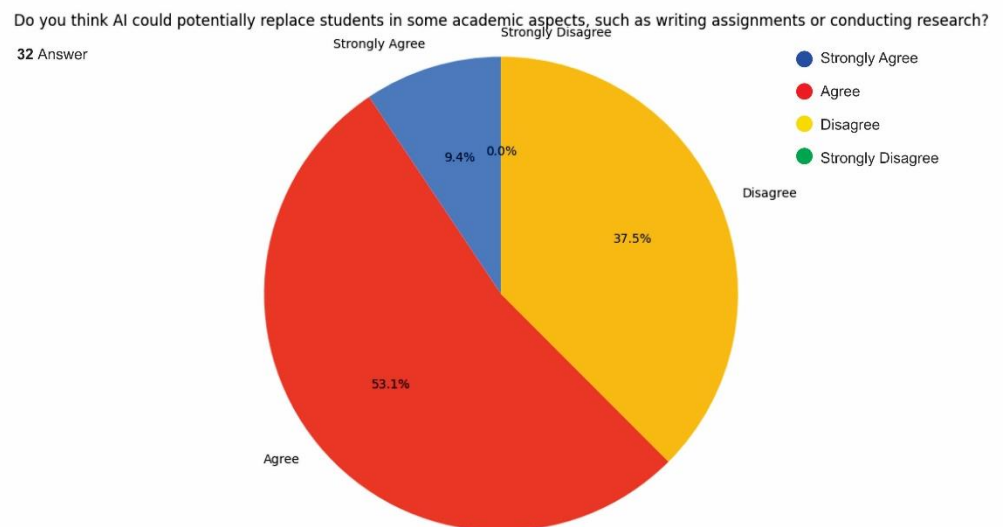


Figure 4. Questionnaire 3: Do you think AI Could potentially replace students in some academic aspects, such as writing assignments or conducting research?

From the questionnaire that we have distributed to 32 student respondents who are active students of the Indonesian Language and Literature Education study program at Singaperbangsa Karawang University, 53.1% who answered in the affirmative felt that AI has the potential to replace the role of students in several academic aspects, such as writing assignments or conducting research.

The use of AI in education has created many new opportunities in designing learning activities to be more productive and developing applications and environments to be better because of technological changes. (Akbar, et al. 2023). Many college students are familiar with artificial intelligence (AI) technology and have used these skills in a variety of ways. For example, some college students use AI to write essays and papers. The use of AI in education has improved students' ability to gather and process information. AI helps students complete complex tasks and improves data analysis skills.

The use of AI can also cause some problems, such as plagiarism and loss of creativity. Many AI-savvy students also use this technology to improve their writing and research skills. For example, AI can help students create more effective presentations. It can also help students manage their time and prioritize tasks. The use of AI in education has increased in recent years, especially with the emergence of more user-friendly AI platforms. For example, ChatGPT developed by OpenAI is very popular among university students.

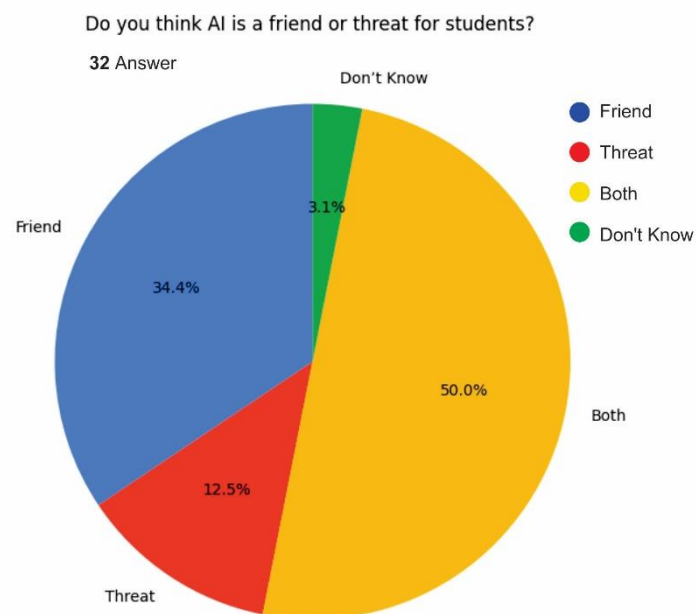


Figure 5. Questionnaire 4: Do you think AI is a friend or threat for students?

From the questionnaires we have distributed, 50% said that AI acts more as a “friend” (help) for them. They were greatly helped in improving their critical thinking skills and creativity through the discussions and references provided. AI can improve the quality of teaching and learning. With AI, the learning process can become more efficient, personalized, and targeted, AI technology can help in providing learning experiences that are tailored to individual needs, provide more timely feedback, and help in developing more effective and engaging learning materials. Thus, the use of AI in education is expected to bring about improvements in the overall quality of the learning and teaching process (Gafar, et al.2024).

AI can improve the efficiency of assignment collection, and can also create platforms or applications through AI systems that can automatically collect assignments, process them quickly, and provide instant feedback to students. AI can take over repetitive tasks, allowing humans to focus on tasks that require creativity, strategic thinking, and complex decision-making. AI can be a friend to its users if users use it wisely such as

understanding the purpose of its use, learning the capabilities of AI, and most importantly paying attention to ethics, security, and privacy evaluation.

The convenience offered by AI can trap students in over-reliance. This can hinder the development of critical thinking, problem-solving, and creativity. Students get used to looking for instant answers from AI without trying to understand the concepts and processes. AI can be used to commit academic fraud, such as plagiarizing assignments or using AI assistants to take exams. This undermines academic integrity and harms other students who study hard.

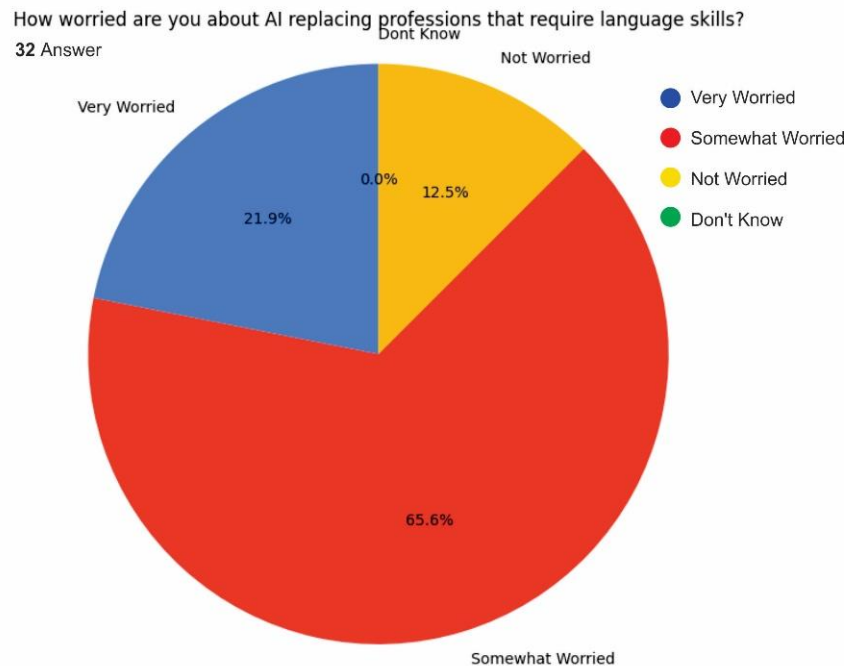


Figure 6. Questionnaire 5: How worried are you about AI replacing professions that require language skills?

The questionnaire results reveal deep concerns among students of Indonesian Language and Literature Education at Singaperbangsa Karawang University regarding the potential for AI to replace their profession. AI's ability to produce high-quality text, as demonstrated by models such as ChatGPT, Gemini, Microsoft Bing, and Perplexity, has sparked fundamental questions about the role of language and literature teachers in the future. Students of Indonesian Language and Literature Education at Singaperbangsa Karawang University may worry that AI will be able to produce literary works, write learning materials, or even proofread writing more efficiently, thus reducing the need for human teachers.

Despite the increasing sophistication of AI, the human ability to understand the social, cultural, and emotional context of language will remain an advantage that cannot be replaced by machines. Students of Indonesian Language and Literature Education at Singaperbangsa Karawang University need to understand that their role as educators and creators is not only limited to mastering techniques, but also involves developing critical thinking skills, creativity, and empathy. Thus, they can prepare themselves to face an increasingly complex future and utilize AI as a tool to improve the quality of education and literary works.

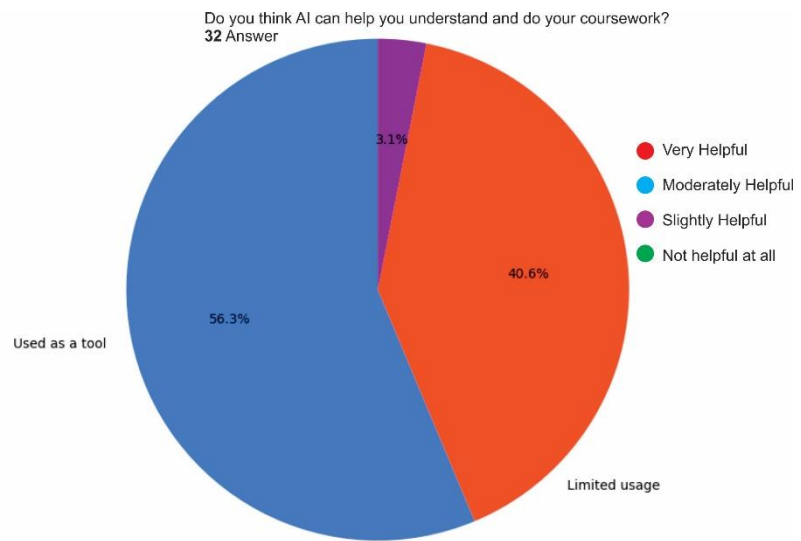


Figure 7. Questionnaire 6: Do you think AI can help you understand and do your coursework?

The results of the questionnaire showed that most students of Indonesian Language and Literature Education at Singaperbangsa Karawang University (56.3%) were greatly helped by AI in understanding and working on lecture assignments. This is most likely due to AI's ability to provide more detailed explanations, access to various sources of information, and the ability to answer questions in real time. These features greatly assist students in overcoming their learning difficulties. Although AI has shown its potential to help students learn, conventional learning methods such as class discussions and tutorials still play an important role. Social interaction with lecturers and classmates can improve concept understanding and communication skills. Therefore, it is important to integrate AI with conventional learning methods effectively.

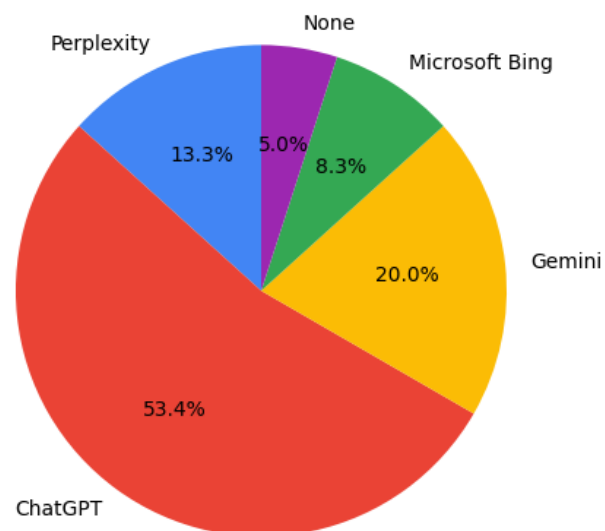


Figure 8. Questionnaire 7: The artificial intelligence application most often used by students of the Indonesian Language and Literature Education study program at Singaperbangsa University of Karawang is?

The questionnaire results show that the most frequently used artificial intelligence application by students of the Indonesian Language and Literature Education study program at Singaperbangsa Karawang University is ChatGPT. One of the main reasons students are attracted to ChatGPT is the flexibility and personalization it offers. ChatGPT can be accessed anytime and anywhere, allowing students to learn at their own pace. In addition, ChatGPT can be customized to suit each individual's learning style. ChatGPT can also be used to search for relevant sources, summarize articles, and even provide suggestions for improving writing, making learning more effective and enjoyable.

The researchers also provided questions that required the questionnaire fillers to give their respective opinions. The results show that the development of Artificial Intelligence (AI) in education has enormous potential and is predicted to continue to grow rapidly in the future. AI can help personalize learning, provide wider access to education, and support students with special needs. However, AI will not completely replace the role of teachers as human mentors who can understand students' emotions and social dynamics. Overuse of AI also raises concerns such as dependence on technology, changes in teacher roles, and data privacy challenges. For AI to be effectively applied in education, it requires adequate infrastructure and a balanced approach to ensure that human interaction is maintained. With a thoughtful strategy, AI has the potential to improve the quality of education inclusively and efficiently, although supervision and limitations on its use are still required.

The use of Artificial Intelligence (AI) in academic settings is seen as a threat to students as it has the potential to create over-reliance, reduce critical thinking skills, and encourage plagiarism. AI, which offers quick, easy, and practical solutions, often replaces the learning process that should involve deep understanding and intellectual effort. As a result, students tend to become passive, losing the opportunity to hone their creativity and independent thinking. The uncontrolled use of AI can also reduce the quality of education as students rely more on technology than their abilities. To avoid these negative impacts, students need to utilize AI wisely and in a balanced manner, while maintaining academic integrity and developing critical thinking skills.

The use of Artificial Intelligence (AI) by students should be done wisely and limited. AI can be an effective tool in learning, researching, and helping to complete assignments, but students should maintain their critical thinking skills and not rely entirely on the technology. AI should ideally be used to obtain references, speed up data analysis, and provide ideas, but it is important to always check and understand the material in depth. Students are advised to use AI as a support rather than a substitute in the learning process so that independent thinking skills and academic ethics are maintained. Thus, AI will be a tool that helps rather than hinders students' intellectual development.

Artificial Intelligence (AI) can be considered a threat to the authenticity of literary works and academic writing because it can generate automated texts that resemble human works. This can facilitate plagiarism, reduce originality, and confuse the boundaries between original and machine-made works. Excessive use of AI by students can also reduce creativity and critical thinking skills. However, AI can also serve as a useful tool if used wisely, supporting research and analysis without compromising originality and intellectual integrity. Therefore, it is important to maintain a balance between utilizing AI and maintaining the uniqueness of works produced through the human creative process.

4. Conclusion

This research shows that artificial intelligence (AI) has great potential to improve student learning, but also brings challenges such as dependency, plagiarism, and changes in the role of teachers. AI can be an effective tool if used wisely and combined with sound pedagogical principles. Overuse of AI can reduce students' critical thinking and creativity. AI should be used as a tool, not as a substitute for human abilities. Students need to maintain a balance between the use of technology and the development of their intellectual skills.

Acknowledgments: Thank you to Mr. Bahar Amal, S.Pd., M.Eng. as the lecturer of the Artificial Intelligence & Data Analysis course, and the entire research team in particular for helping the completion of this research, as well as fellow of Indonesian language and literature education students at Singaperbangsa Karawang University who participated in filling out the questionnaire, as well as friends who always encourage and inspire, hopefully, the results of this research can provide benefits for the development of science, especially related to the use of artificial intelligence in Indonesian language and literature education.

Author contributions: The authors were responsible for building Conceptualization, Methodology, analysis, investigation, data curation, writing—original draft preparation, writing—review and editing, visualization, supervision of project administration, funding acquisition, and have read and agreed to the published version of the manuscript.

Funding: The study was conducted without any financial support from external sources.

Availability of data and Materials: All data are available from the authors.

Conflicts of Interest: The authors declare no conflict of interest.

Additional Information: No Additional Information from the authors.

References

- Ahnaf, F. H., & Setiadi, G. (2023). Efektivitas Teknologi Artificial Intelligence Berbasis Text To Image Adobe Firefly Untuk Meningkatkan Kreativitas Menulis Cerpen. *Jurnal Bastra*, 8(4), 674–682. <https://doi.org/10.36709/bastra.v8i4.338>
- Akbar, dkk. 2023. Artificial Intelligence Teman atau Musuh sih?
- Aprilliani, F. N., Utomo, A. P. Y., Rahmawati, W., & Malikhah, M. (2023). Penerapan Media Shorby dalam Teks Artikel pada Pembelajaran Bahasa Indonesia di SMA 1 Semarang. *Jurnal Pendidikan Dan Ilmu Sosial (Jupendis)*, 1(2), 31–44. <https://jurnal.itbsemarang.ac.id/index.php/JUPEN DIS/article/view/108>
- Arifah, I. D. C. (2022). JOB REPLACEMENT ARTIFICAL INTELLIGENCE DI INDUSTRI JASA: TINJAUAN PUSTAKA SISTEMATIS. 10, 911–929.
- Arly, A., Dwi, N., & Andini, R. (2023). Implementasi Penggunaan Artificial Intelligence Dalam Proses Pembelajaran Mahasiswa Ilmu Komunikasi di Kelas A. *Prosiding Seminar Nasional*, 362–374
- Erizal, R. M., Safitra, A., Mulia, P. F., & Azmi, Z. (2024). Analisis Pemanfaatan Kecerdasan Buatan Menggunakan Platform Chat-GPT Untuk Mendukung Proses Pendidikan Bagi Mahasiswa. *Student Scientific Creativity Journal*, 2(1), 187–197.
- Fadilla, A. N., Ramadhani, P. M., & Handriyotopo, H. (2023). Problematika Penggunaan AI (Artificial Intelligence) di Bidang Ilustrasi: AI VS Artist. *CITRAWIRA: Journal of Advertising and Visual Communication*, 4(1), 129–136
- Gafar, dkk. (2024). Jembatan ilmu: AI Dalam Konteks Akademis Untuk Masa Depan Pendidikan
- Gleneagles, D. B., Larasyifa, F., & Fawaiz, R. (2024). Peran Teknologi Kecerdasan Buatan (AI) dalam Meningkatkan Efisiensi Proses Belajar dan Pembelajaran. *Madani: Jurnal Ilmiah Multidisiplin*, 2(5), 107–116.
- Hadana, H. S., Purwo, A., Utomo, Y., Sa'adah, N., & Ardyasti, T. (2023). Implementasi Media Canva pada Pembelajaran Bahasa Indonesia Teks Negosiasi Kelas X SMA Negeri 11 Semarang. *Jupendis: Jurnal Pendidikan Dan Ilmu Sosial*, 1(1), 126–142
- Haryawan, C. (2024). Artificial Intelligence dalam Dunia Pendidikan, Bantuan atau Ancaman. *Kedaulatan Rakyat*.
- Hasibuan, M. E. L., Rahayu, W. S., Al Husna, N., Yuniarsih, P., Maharani, V., Primadani, R. A., & Huda, M. F. (2024). Dampak Penggunaan AI (Artificial Intelligence) dalam Industri Kreatif bagi Mahasiswa Seni Rupa Angkatan 2023 Universitas Negeri Semarang. *Journal of Education and Technology*, 4 (1) Juni (2024): 11–17.
- Jaya, H., Sabran, Idris, M.M., Djawad, Y.A., Ilham, Ahmar, A.S. (2018). Kecerdasan Buatan. Makassar: Fakultas MIPA Universitas Negeri Makassar.
- Liriwati, F. Y. (2023). Transformasi Kurikulum; Kecerdasan Buatan untuk Membangun Pendidikan yang Relevan di Masa Depan. *IHSAN: Jurnal Pendidikan Islam*, 1(2), 62–71.
- Prasetyo, T. (2024). Persepsi Mahasiswa Program Studi Akuntansi Terhadap Dampak Artificial Intelligence Pada Profesi Akuntan. *Jurnal Ekonomi & Manajemen Universitas Bina Sarana Informatika*, 22(1), 29–36.
- Purbohadi, D. (2023). Peningkatan Kompetensi Guru pada Pemrograman Robot Artificial Intelligence Artibo. *Jurnal Pendidikan Tambusai*, 6, 11481–11488. <https://www.jptam.org/index.php/jptam/article/view/4266%0Ahttps://www.jptam.org/index.php/jpta>

m/article/download/4266/3565

17. Rachmadana, S. L., Alkusuma Putra, S. A., & Dfinubun, Y. (2022). Dampak Artificial Intelligence Terhadap Perekonomian. *Financial and Accounting Indonesian Research*, 2(2), 71–82. <https://doi.org/10.36232/jurnalfairakuntansiunimu.da.v2i2.3837>
18. Rahman, M. A. (2 Maret 2024). Dampak Buruk AI bagi Mahasiswa: Sebuah Ancaman Tersembunyi di Era Digital. *Kompasiana*.
19. Satrinia, D., Firman, R. R., & Fitriati, T. N. (2023). Potensi Artificial Intelligence dalam Dunia Kreativitas Desain. *Journal of Informatics and Communication Technology (JICT)*, 5(1), 159–168.
20. Sony Maulana, M., Nurmalasari, Rheno Widiyanto, S., Dewi Ayu Safitri, S., & Maulana, R. (2023). Pelatihan Chat Gpt Sebagai Alat Pembelajaran Berbasis Artificial Intelligence Di Kelas. *Jurnal Penelitian Dan Pengabdian Masyarakat Jotika*, 3(1), 16–19.
21. Winartha, I Made, 2006. *Metodologi Penelitian Sosial Ekonomi*. Andi Offset, Yogyakarta. <https://proceeding.unesa.ac.id/index.php/sniis/article/download/816/291>